

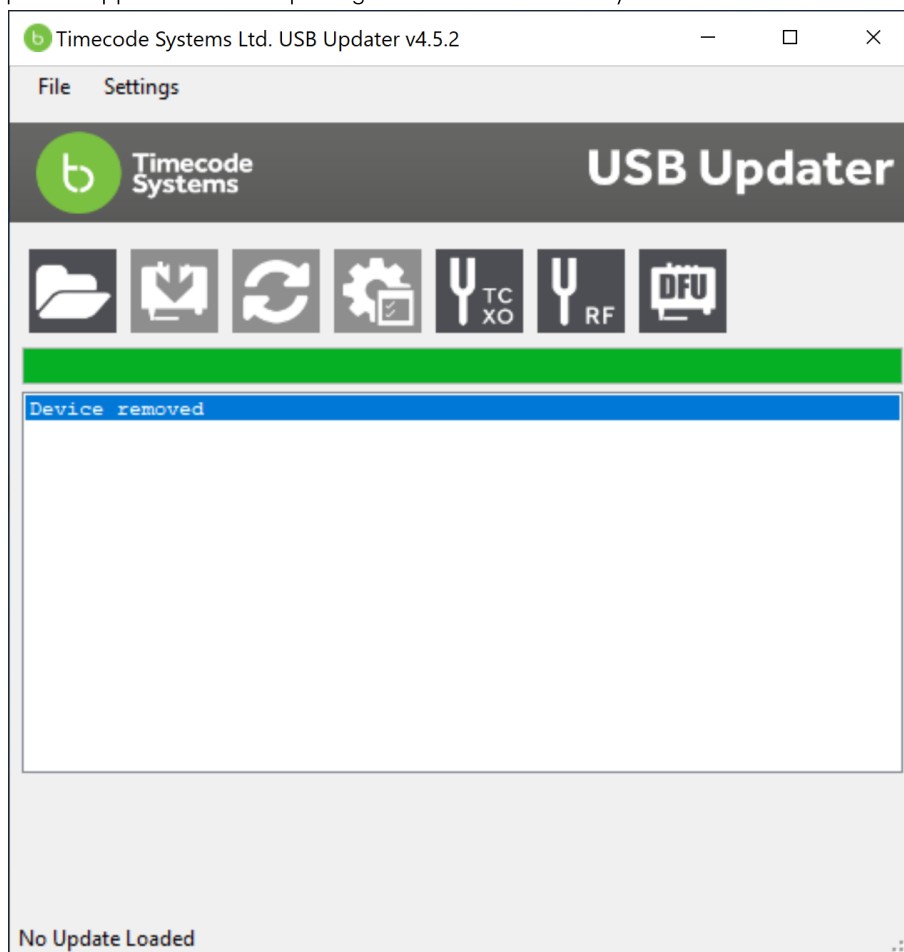
## Configuring Ultrasync One Module to Output LTC over USB Serial Port

Prerequisites:

- Timecode Systems Ultrasync One module
- USB cable for connecting Ultrasync One module to PC running USB Updater
- Download and install Timecode Systems USB Updater program:  
<https://www.timecodesystems.com/support/firmware/>

### 1.0 Configuring the Ultrasync One Module

1. Open USB Updater App. Here is the opening screen with no Ultrasync One connected to the PC:

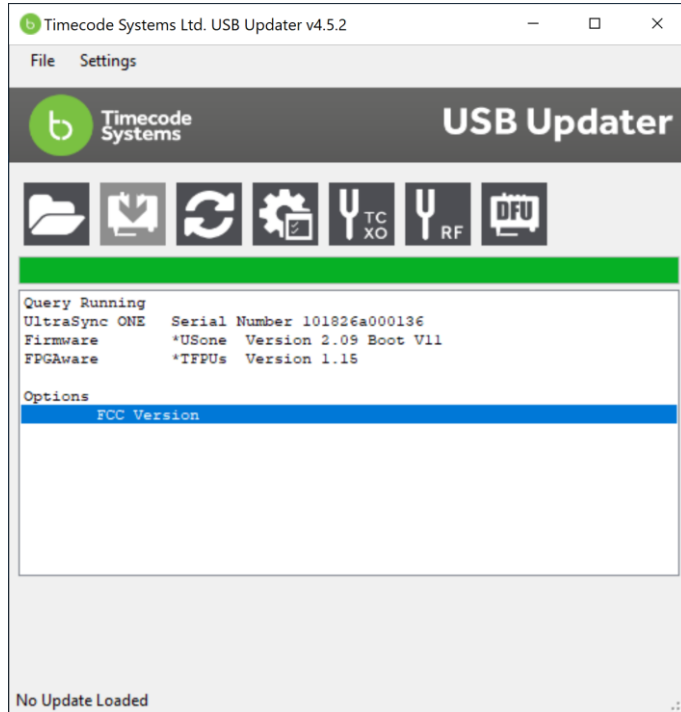


**StretchSense Ultrasync One Module Configuration**

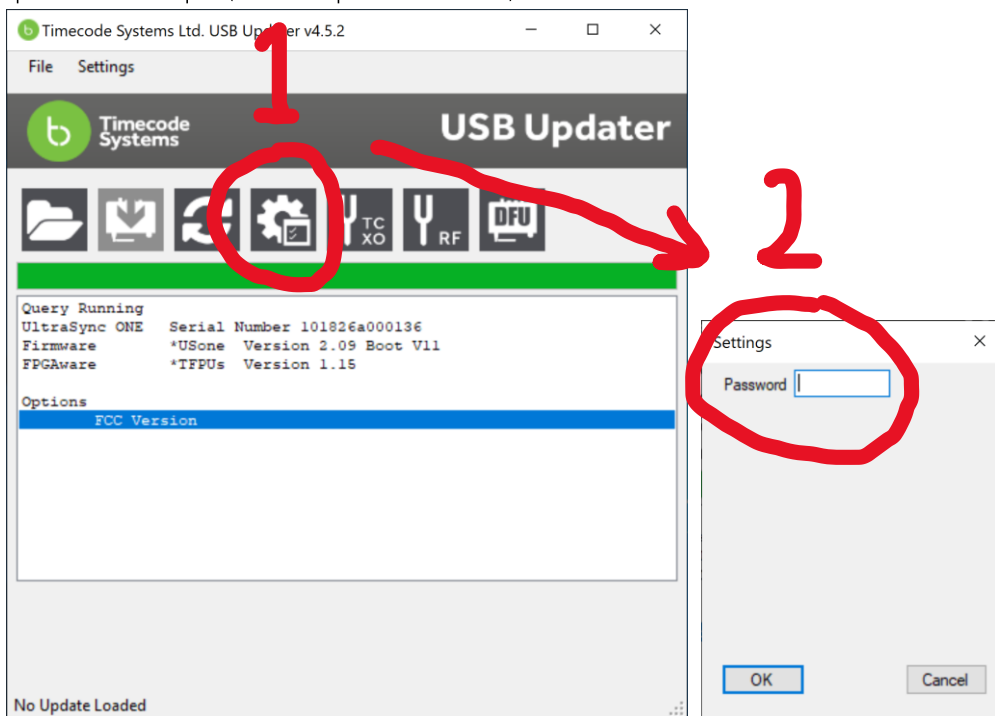
Created 20191029  
Last Updated: 20191029  
Last Updated By: TG  
Authors: TG  
Revision: 1



- 2. Connect the Ultrasync One module. USB Updater will automatically detect the unit and do a check for updates. (See screen shot below for the version of the USOne module firmware that StretchSense has tested on). Here is the new state of USB Updater:



- 3. Click the **Cog** icon. A popup window will appear that asks you to enter the password to access the settings. Enter the password '8B4p3' (without quotation marks) and click **OK**.

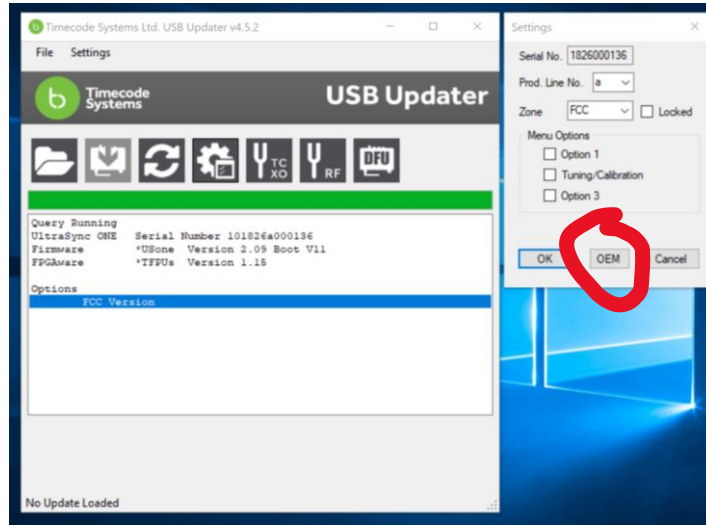


### StretchSense Ultrasync One Module Configuration

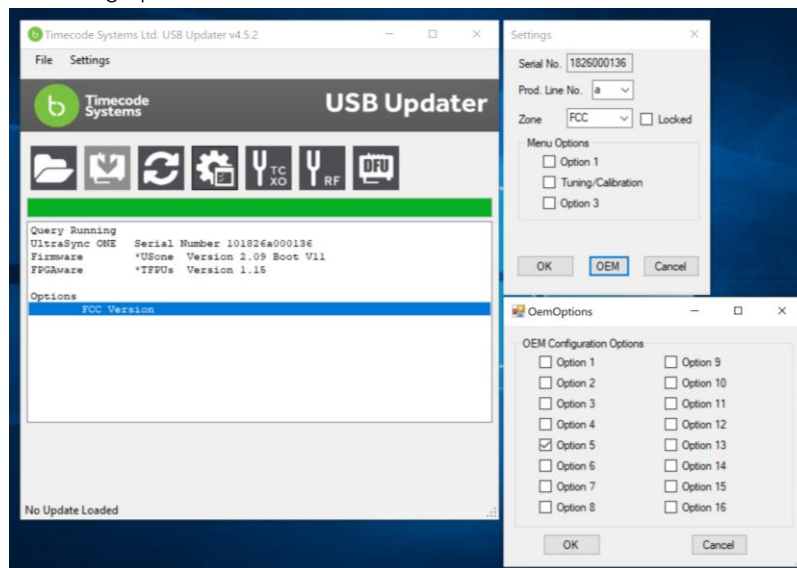
Created 20191029  
Last Updated: 20191029  
Last Updated By: TG  
Authors: TG  
Revision: 1



4. In the Settings Window, Click the **OEM button** to open the OEM Configuration Options:



5. In the OEM Options, the relevant options are **1, 2, 4, and 5**. The baud rate should be set to 57600 which corresponds to **1-off and 2-off**. The broadcast timecode should be set to 'every frame' which corresponds to **4-off 5-on**. The effects of other options have not been tested, however Timecode Systems recommends the remaining options be left unticked/off.



6. Hit **OK** on OEM Options, **OK** on Settings, and close the USB Updater app.
7. Power off the USOne module and turn it on again. Now when you connect it to the MoCap Pro glove the timestamp will be replaced with the LTC from the USOne module. Note to go back to the MoCap Pro glove internal frame counter you must power off the MoCap Pro glove circuit and power it on again.